



WORLD LEADER IN CORDLESS INNOVATION



**NUMBER 1 SUBCOMPACT
SYSTEM ON THE MARKET**
70+ TOOLS

M12

MILWAUKEE ELECTRIC TOOL

Milwaukee Electric Tool Corporation
13135 West Lisbon Road,
Brookfield, WI 53005
Tel: +1 (262) 781-3600 • Fax: +1 (262) 790-6333

Milwaukee Asia Office
29/F, Tower 2, Kowloon Commerce Centre,
51 Kwai Cheong Road, Kwai Chung, Hong Kong
Tel: +852-2492-2181 • Fax: +852-2490-4778

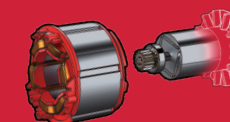
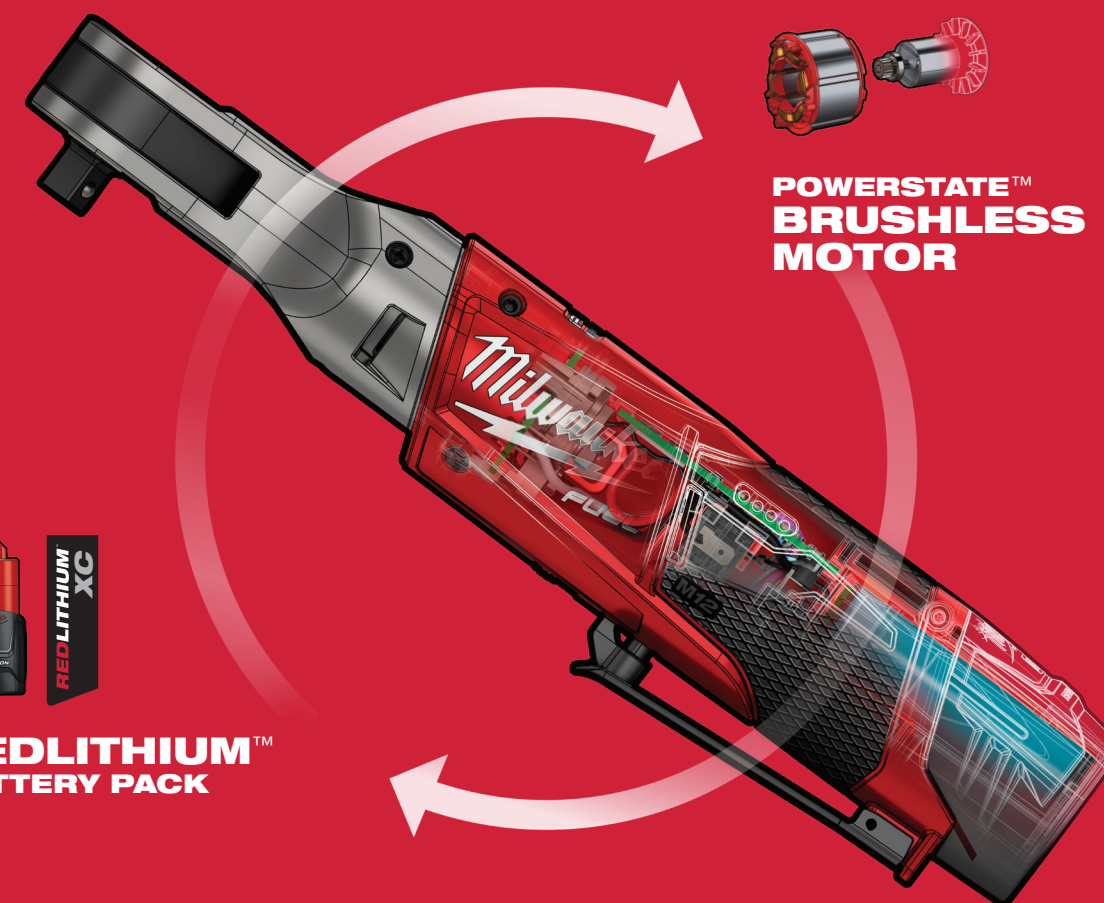
Distributed by:

All data incl. service and warranty conditions as well as product range are subject to change without notice.
Pictures not binding. No liability for printing errors or mistakes. Copyright 2018 – Milwaukee Electric Tool Corporation

www.milwaukeetool.asia



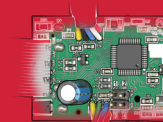
M12 FUEL
DRIVEN TO OUTPERFORM.™



**POWERSTATE™
BRUSHLESS
MOTOR**



**REDLITHIUM™
BATTERY PACK**



**REDLINK PLUS™
INTELLIGENCE**

M12 FIR12 / FIR14 / FIR38

**M12 FUEL™
IMPACT
RATCHETS**

UP TO
81 Nm
MAX TORQUE

MORE
ACCESS IN
TIGHT SPACES

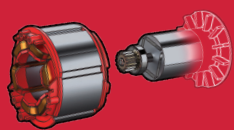
**GREATER
DURABILITY**



DRIVEN TO OUTPERFORM.

M12 FUEL™ is engineered for the most demanding tradesmen in the world. M12 FUEL™ delivers unrivaled performance in a compact structure and features three MILWAUKEE™ exclusive innovations — the POWERSTATE™ Brushless Motor, REDLITHIUM™ Battery Pack, and REDLINK PLUS™ Intelligence Hardware and Software — that deliver unmatched power, run-time and durability. Simply put, the M12 FUEL™ Ratchets are the most powerful 12V ratchets in the industry, the first true replacement for pneumatic ratchets, hoses and compressors.

M12 FUEL

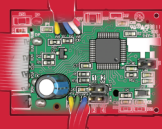


POWERSTATE™ BRUSHLESS MOTOR

- MILWAUKEE™ Designed and Built Brushless Motor
- Outperforms All Leading Competitors



REDLITHIUM™ BATTERY PACK



REDLINK PLUS™ INTELLIGENCE

- Most Advanced Electronic System on the Market for Maximum Performance

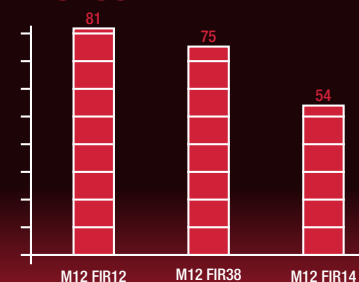
UP TO
81 Nm
MAX TORQUE

MORE
ACCESS IN
TIGHT SPACES

**GREATER
DURABILITY**

UP TO **81** Nm MAX TORQUE

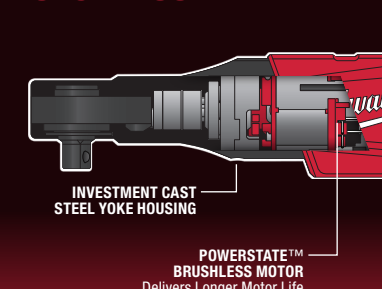
INCREASED PRODUCTIVITY



- Replaces pneumatic ratchets
- POWERSTATE™ Brushless Motor delivers the power for high torque applications

GREATER DURABILITY

LONGER TOOL LIFE



- POWERSTATE™ Brushless Motor is the industry's first brushless motor for ratchets, delivering longer motor life.
- Investment Cast steel yoke housing delivers unmatched durability for daily shop use

M12 FUEL

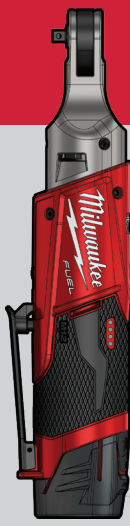


MORE ACCESS IN TIGHT SPACES

SMALLER HEAD PROFILE



- Compact head design provides increased access in the tightest spaces



	M12 FIR14			M12 FIR38			M12 FIR12	
	DESCRIPTION			DESCRIPTION			DESCRIPTION	
	Anvil Type	1/4" Square		Anvil Type	3/8" Square		Anvil Type	1/2" Square
	Max Torque	54 Nm		Max Torque	75 Nm		Max Torque	81 Nm
	RPM	0 - 250		RPM	0 - 190		RPM	0 - 175
	Length	284 mm		Length	302 mm		Length	318 mm
	Weight	1.04 Kg		Weight	1.27 Kg		Weight	1.40 Kg