



# M12 GG

SERVICE PARTS DIAGRAM

TTI Model Number: 018 482 015, 021

M12™ GREASE GUN

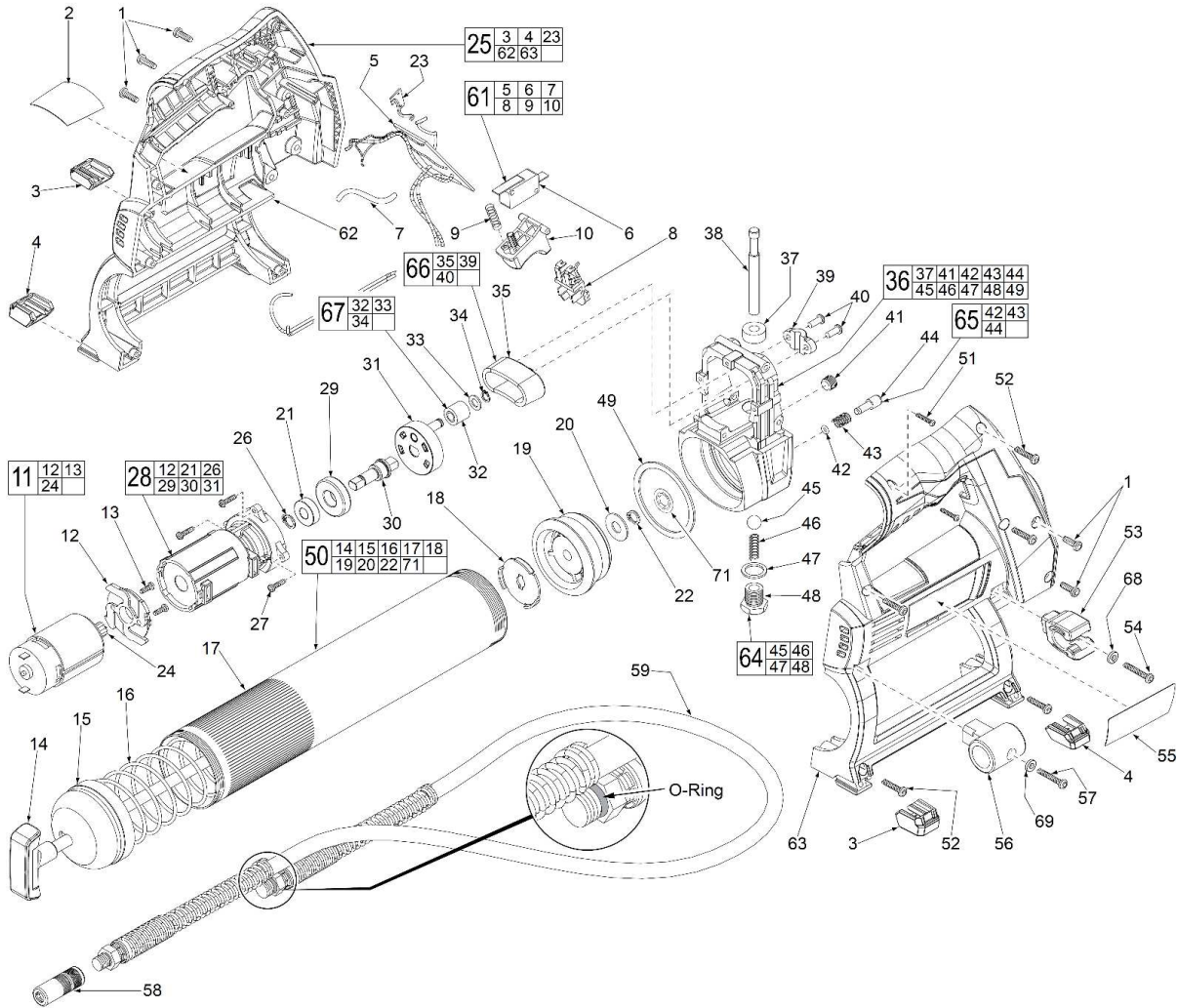
Bulletin Date:

Apr-21

Starting Serial Number:

VERSION A - L2013

**EXAMPLE:**  
Component Parts (Small #) Are Included  
When Ordering The Assembly (Large #).



**NOTE:**  
Replacement gearcase assembly (28) comes with a motor mount plate (12) that must be removed & discarded when servicing. A motor mount plate already exists on the motor assembly (11).





# M12 GG

SERVICE PARTS LIST

TTI Model Number: 018 482 015, 021

M12™ GREASE GUN

Bulletin Date:

**Apr-21**

Starting Serial Number:

VERSION A - L2013

ITEM	PART NUMBER	PART DESCRIPTION	QTY (PCS)
1	660165011	M4 X 12MM SCREW	5
2	941300046	WARNING LABEL <i>018482015 CN VERSION</i>	1
2	941300253	WARNING LABEL <i>018482021 ASIA VERSION</i>	1
3	562332001	PAD - LEFT FRONT AND RIGHT REAR (SET OF 2)	1
4	562333001	PAD - LEFT REAR AND RIGHT FRONT (SET OF 2)	1
5	280087039	PCBA WITH WIRING	1
6	760467002	SWITCH	1
7	770312123	18 GAUGE RED WIRE	1
8	303508004	BATTERY CONNECTOR BLOCK	1
9	692528001	SPRING	1
10	520542001	TRIGGER	1
11	201329005	MOTOR ASSEMBLY <i>018482015 CN VERSION</i>	1
11	201329007	MOTOR ASSEMBLY <i>018482021 ASIA VERSION</i>	1
12	519336007	MOTOR MOUNT PLATE	1
13	660211062	M3 X 6MM SCREW	2
14	303556001	PLUNGER ROD WITH ROD	1
15	-	BARREL TUBE COVER	1
16	-	BARREL SPRING	1
17	-	BARREL	1
18	633292001	STAMPING PLATE	1
19	562353001	RUBBER SEAL	1
20	680335025	WASHER	1
21	680335069	SPACER	1
22	670608001	RETAINING RING	1
23	290304009	FUEL GAUGE	1
24	610447032	MOTOR PINION	1
25	200447008	HOUSING ASSEMBLY KIT	1
26	670608001	RETAINING RING	1
27	660414024	M4 X 12MM SCREW	3
28	201207004	GEARCASE ASSEMBLY	1
29	681316002	BALL BEARING	1
30	621113001	OUTPUT SHAFT	1
31	611143001	CRANK FLANGE	1
32	300874002	BUSHING ASSEMBLY	1
33	631989001	WASHER	1
34	670704001	RETAINING RING	1



# M12 GG

SERVICE PARTS LIST

TTI Model Number: 018 482 015, 021

M12™ GREASE GUN

Bulletin Date:

**Apr-21**

Starting Serial Number:

VERSION A - L2013

ITEM	PART NUMBER	PART DESCRIPTION	QTY (PCS)
35	692474003	YOKE	1
36	201209004	PUMP BODY KIT	1
37	560959001	SEAL RING	1
38	621121001	PISTON	1
39	692473003	YOKE COVER	1
40	661889001	M4 X 10MM SCREW	2
41	660160004	HEX SCREW	1
42	560957001	O-RING	1
43	690440002	SPRING	1
44	692507001	AIR RELEASE BUTTON	1
45	690366001	3/8" BALL	1
46	690364001	SPRING	1
47	670081002	COPPER WASHER	1
48	660073001	PLUG SCREW	1
49	560956002	RUBBER GASKET	1
50	201443001	BARREL ASSEMBLY	1
51	661047001	M2.6 X 14MM SCREW	2
52	660998001	6 X 11/16" SCREW	5
53	562336001	GREASE HOSE HOLSTER	1
54	661395001	M4 X 20MM SCREW	1
55	941048073	SERVICE NAMEPLATE KIT <b>018482015 CN VERSION</b>	1
55	941123209	SERVICE NAMEPLATE KIT <b>018482021 ASIA VERSION</b>	1
56	562334001	COUPLER HOLSTER	1
57	660999001	6 X 7/8" SCREW	1
58	201445001	COUPLER ASSEMBLY	1
59	303539001	GREASE HOSE ASSEMBLY	1
61	201320009	SWITCH ASSEMBLY	1
62	-	LEFT HOUSING HALVE	1
63	-	RIGHT HOUSING HALVE	1
64	201459001	PLUG SCREW KIT	1
65	201460001	AIR RELEASE KIT	1
66	201461001	YOKE KIT	1
67	201462001	BUSHING KIT	1
68	670030009	SPRING WASHER	1
69	633090001	WASHER	1
70	902189008	NYLON BAG <b>018482015 CN VERSION</b>	1
71	633612001	SELF-LOCKING RETAINING RING	1



# M12 GG

SERVICE INSTRUCTION

TTI Model Number: 018 482 015, 021

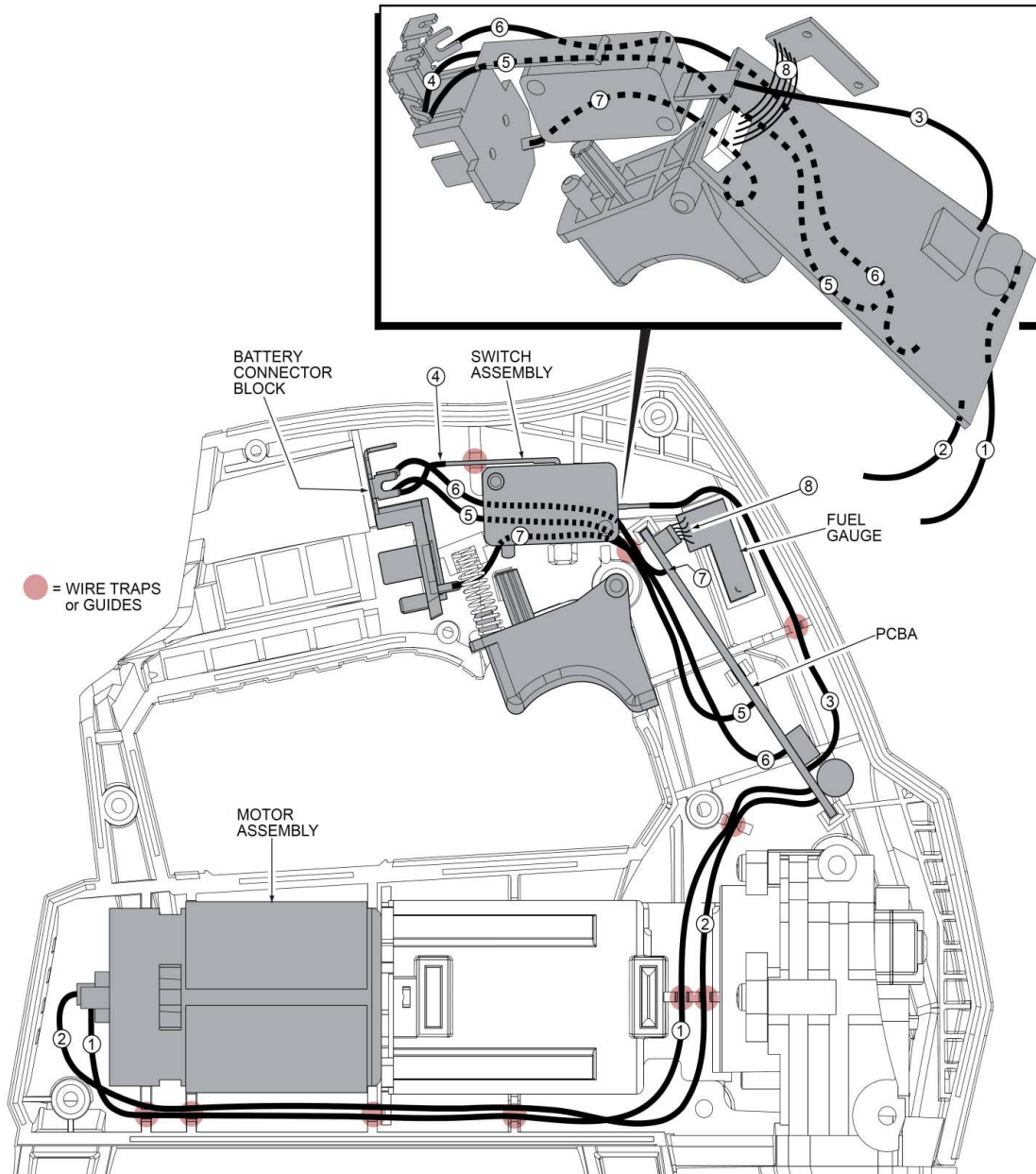
## M12™ GREASE GUN

Bulletin Date:

**Apr-21**

Starting Serial Number:

VERSION A - L2013



### WIRING SPECIFICATIONS

Wire No.	Wire Color	Origin or Gauge	Length	Terminals, Connectors and 1 or 2 End Wire Preparation
1	Red	----	----	Wire connects from PCBA to (+) right side of motor.
2	White	----	----	Wire connects from PCBA to (-) left side of motor.
3	Blue	----	----	Wire connects from PCBA to front of switch.
4	Red	----	----	Wire connects from connector block (with #5) to back of switch.
5	Red	----	----	Wire connects from PCBA to connector block (with #4).
6	Black	----	----	Wire connects from PCBA to connector block.
7	White	----	----	Wire connects from PCBA to connector block.
8	----	----	----	Fuel gauge harness plugs into PCBA.

AS AN AID TO REASSEMBLY, TAKE NOTICE OF WIRE ROUTING AND POSITION IN WIRE GUIDES AND TRAPS WHILE DISMANTLING TOOL.

BE CAREFUL AND AVOID PINCHING WIRES BETWEEN HANDLE HALVES WHEN ASSEMBLING.