



M12 FPD

SERVICE PARTS DIAGRAM

TTI Model Number: 018 194 019, 023, 024, 029, 061

M12 FUEL™ COMPACT PERCUSSION DRILL

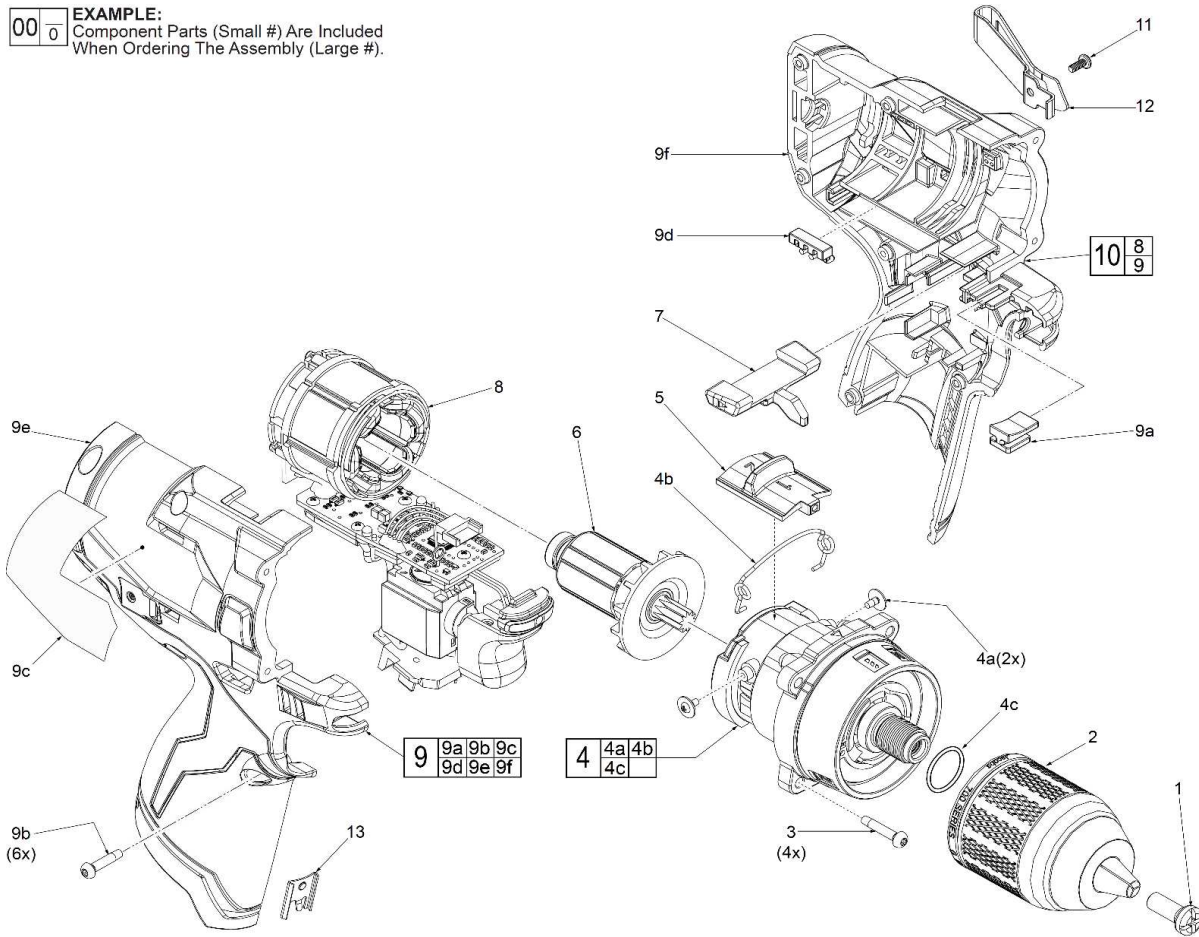
Bulletin Date:

Dec-20

Starting Serial Number:

VERSION A - A2018

00 **0** **EXAMPLE:**
Component Parts (Small #) Are Included
When Ordering The Assembly (Large #).



SCREW TORQUE SPECIFICATION CHART

FIG.	PART NO.	DESCRIPTION	SEATING TORQUE (Nm)
1	660134011	Chuck Screw	3.729±0.283
3	662456001	Gearcase Assembly Screw	0.791±0.283
4a	661262001	Speed Selector Lever Screw	0.396±0.113
9b	660570005	Right Housing Halve Screw	0.791±0.283
11	661703002	Belt Clip	Hand Tighten



M12 FPD

SERVICE PARTS LIST

Bulletin Date:

Dec-20

TTI Model Number: 018 194 019, 023, 024, 029, 061

Starting Serial Number:

M12 FUEL™ COMPACT PERCUSSION DRILL

VERSION A - A2018

ITEM	PART NUMBER	PART DESCRIPTION	QTY (PCS)
1	660134011	CHUCK SCREW	1
2	208193004	1/2" (13MM) KEYLESS CHUCK	1
2	208305007	1/2" (13MM) KEYLESS CHUCK (BLACK OXIDE)	1
3	662456001	M3 X 16MM SCREW	4
4	208194002	GEAR CASE ASSEMBLY	1
4a	661262001	M2.3 X 4.5MM SCREW	2
4b	696135001	SPEED SELECTOR LEVER	1
4c	564745001	O RING	1
5	204193004	SPEED SELECTOR SLIDE ASSEMBLY	1
6	208193006	ROTOR <i>018194019 ASIA, 023 KR, 024, 029 AZN VERSION</i>	1
6	208193012	ROTOR <i>018194061 ONLY JP VERSION</i>	1
7	532431001	FORWARD/REVERSE SHUTTLE	1
8	208193002	ELECTRONICS ASSEMBLY	1
9	204194007	HOUSING KIT <i>018194019 ASIA, 023 KR, 024, 029 AZN VERSION</i>	1
9	204194008	HOUSING KIT <i>018194061 ONLY JP VERSION</i>	1
9a	564399001	SEALING PAD	1
9b	660570005	M3 X 14MM SCREW	6
9c	941121979	RATING LABEL <i>018194019 ASIA, 023 KR, 024, 029 AZN VERSION</i>	1
9c	941050569	RATING LABEL <i>018194061 ONLY JP VERSION</i>	1
9d	532493001	PLASTIC,LIGHT PIPE	1
9e	-	HOUSING COVER-RIGHT	1
9f	-	HOUSING SUPPORT LEFT	1
10	208194015	ELECTRONICS/HOUSING ASSEMBLY	1
11	661703002	M2.5 X 6MM SCREW	1
12	637996002	BELT CLIP	1
13	631542003	HOUSING CLIP	1
14	204193006	BLOW MOLDED CARRYING CASE	1



M12 FPD

SERVICE INSTRUCTION

TTI Model Number: 018 194 019, 023, 024, 029, 061

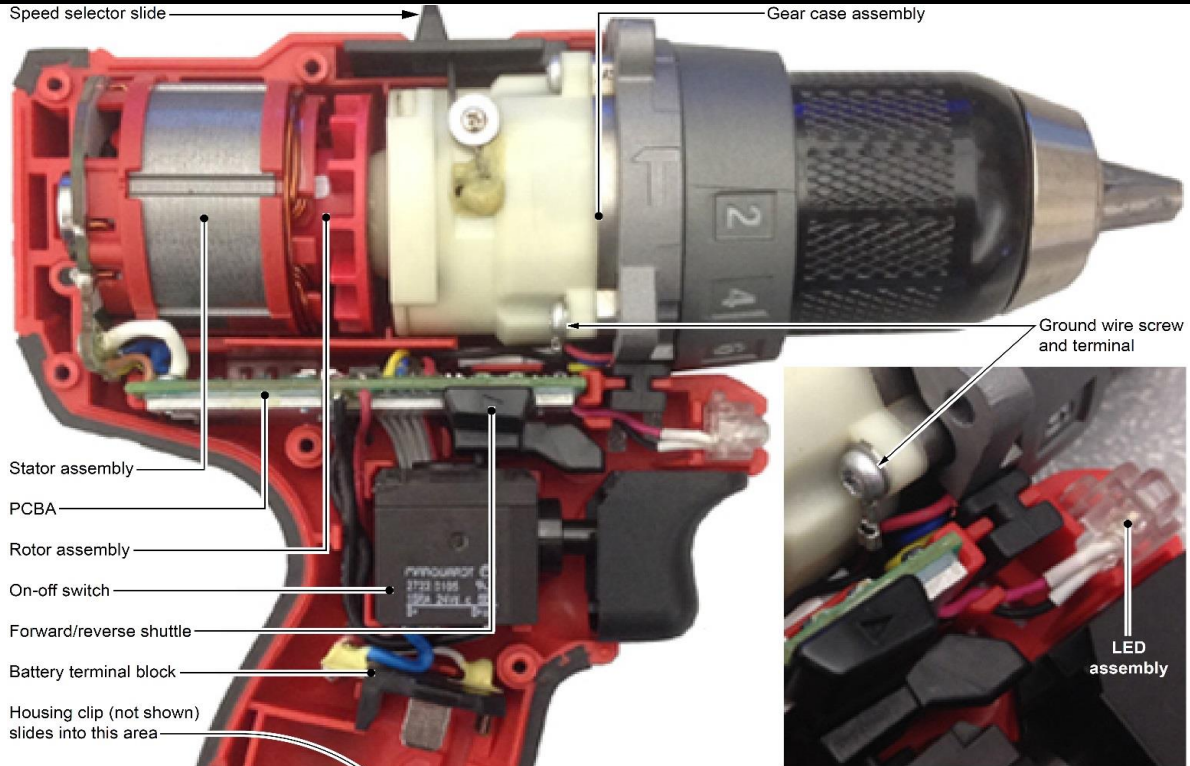
M12 FUEL™ COMPACT PERCUSSION DRILL

Bulletin Date:

Dec-20

Starting Serial Number:

VERSION A - A2018



To remove Electronics Assy. (8) in the model :

Use a T-10 bit to remove six handle screws (9b) and four gear case screws (3) from housing halves (9e and 9f). Remove housing clip (13). Remove left housing half (9e).

Use a T-10 bit to remove ground screw.

Gently wiggle front end to separate gear case assembly (4) from pinion of rotor assembly (6). Carefully disconnect male/female wire terminals to separate gear case assembly from PCBA.

Lift stator from left housing cavity and carefully remove rotor assembly from the stator.

Lift old electronics assembly out of left housing half, paying attention to wire routing and trapping.

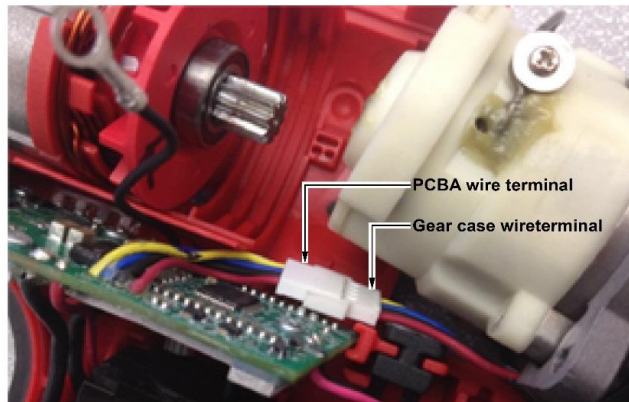
To install new Electronics Assembly (8) in the model :

Carefully place existing rotor (6) into stator of new electronics assembly.

Connect female wire terminal of gear case assembly (4) with male wire terminal of the PCBA.

Place stator/rotor and PCBA firmly and squarely into corresponding channels and cavities of left housing half (9e).

Insert the rotor pinion into rear of gear case assembly, meshing the gears and seating the rotor bearing. At this point install two gear case screws (3), partially securing electronics assembly and gear case assembly.



Be sure connected wire terminals are trapped between a small tab in the housing half (above the PCBA) and below the gear case. Put ground screw through ground wire terminal and install onto gear case. Be sure terminal connector wires and ground wire are tucked back into left housing half.

Place LED assembly, on-off switch and battery terminal block firmly and squarely into the corresponding channels and cavities of the left housing half. Be sure all wires are routed and tucked down in channels and traps as illustrated above.

Re-install speed selector slide (5) and forward/reverse shuttle (7).

Carefully place right handle half onto left handle half. Check for any component interference or pinched wires. Re-install remaining screws and housing clip. Check for proper functionality of on-off switch, forward/reverse shuttle and speed selector.

Install battery and check for the proper operation of tool.