



M12 FID

SERVICE PARTS DIAGRAM

TTI Model Number: 018 256 010, 011, 012, 013, 014, 015, 016, 021

M12™ FUEL IMPACT DRIVER

Bulletin Date:

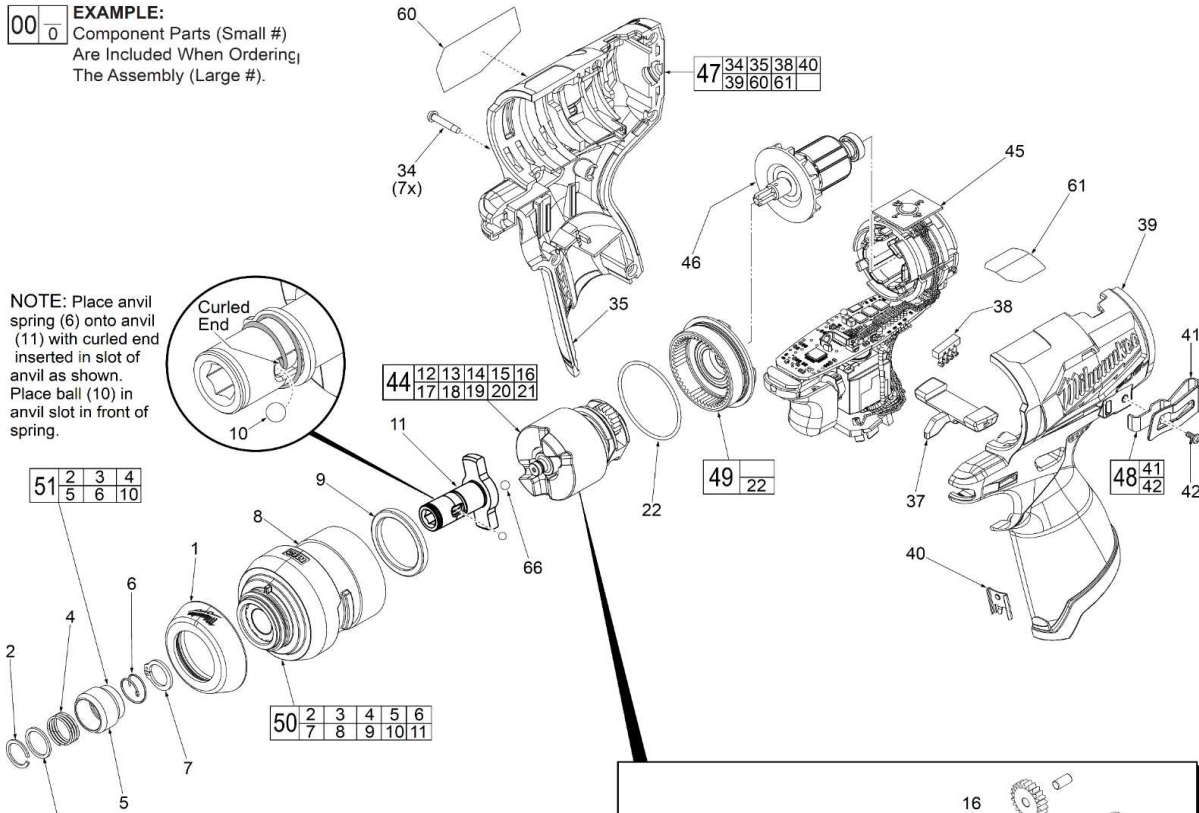
Jan-21

Starting Serial Number:

VERSION A - C2018

EXAMPLE:
Component Parts (Small #)
Are Included When Ordering,
The Assembly (Large #).

NOTE: Place anvil spring (6) onto anvil (11) with curled end inserted in slot of anvil as shown. Place ball (10) in anvil slot in front of spring.



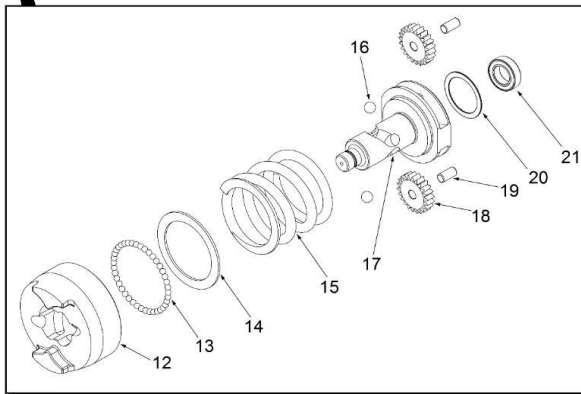
51	2	3	4
	5	6	10

50	2	3	4	5	6
	7	8	9	10	11

When servicing, remove 90-95% of the existing grease prior to installing Type 'J'. Original grease maybe similar in color but not compatible with 'J'.

FIG. LUBRICATION
(Type 'J' Grease, Item 1200):

- 8 Coat anvil opening in the front of the gear case with grease.
- 10,11 Lightly coat front washer surface of anvil (11) with grease, place a dab in the ball slot of anvil.
- 44,49 Lightly coat the inside gear teeth of ring gear end cap (49) and the gear teeth of the planet gears of impacting assembly (44) with grease.
- 46 Coat pinion of rotor assembly (46) with grease.





M12 FID

SERVICE PARTS LIST

TTI Model Number: 018 256 010, 011, 012, 013, 014, 015, 016,
021

M12™ FUEL IMPACT DRIVER

Bulletin Date:

Jan-21

Starting Serial Number:

VERSION A - C2018

ITEM	PART NUMBER	PART DESCRIPTION	QTY (PCS)
1	564407001	RUBBER CAP	1
2	690258001	RETAINING RING	1
3	690266005	WASHER (NEW)	1
3	690266001	WASHER (OLD)	1
4	690261001	SPRING	1
5	690260059	SLEEVE	1
6	693384001	ANVIL SPRING	1
7	637242002	RETAINING RING	1
8	312755003	FRONT GEAR CASE	1
9	524651001	NYLON RING	1
10	690268001	3.5MM STEEL BALL	1
11	621352192	ANVIL	1
12	693116003	HAMMER	1
13	670221001	3.0mm STEEL BALL	27
14	634290001	WASHER	1
15	693164054	SPRING	1
16	680015001	3/16" STEEL BALL	2
17	621338056	CAMSHAFT	1
18	611575003	PLANET GEAR	1
19	671565005	PLANET GEAR PIN	2
20	680335100	WASHER	1
21	682185001	BALL BEARING	1
22	564411001	O-RING	1
34	662456001	M3 X 16MM PAN HD. ST T-10 SCREW	7
35	-	HOUSING COVER - RIGHT HOUSING	1
37	533128001	FORWARD/REVERSE SHUTTLE	1
38	533197001	LIGHT PIPE	1
39	-	HOUSING SUPPORT - LEFT HOUSING	1
40	631542003	HOUSING CLIP	1
41	-	BELT CLIP	1
42	661703002	M2.5 X 6MM PAN HD. PHILLIPS MACH. SC	1
44	208299004	IMPACTING ASSEMBLY	1
45	208300001	ELECTRONICS ASSEMBLY	1
46	208301001	ROTOR ASSEMBLY	1
46	208301004	ROTOR ASSEMBLY 018256021 ONLY JP VERSION	1
47	204517004	HOUSING KIT	1
47	204517013	HOUSING KIT 018256021 ONLY JP VERSION	1

	<h1>M12 FID</h1> <p>SERVICE PARTS LIST</p> <p>TTI Model Number: 018 256 010, 011, 012, 013, 014, 015, 016, 021</p> <p>M12™ FUEL IMPACT DRIVER</p>	<p>Bulletin Date: Jan-21</p> <p>Starting Serial Number: VERSION A - C2018</p>
---	--	---

ITEM	PART NUMBER	PART DESCRIPTION	QTY (PCS)
48	204518001	BELT CLIP KIT	1
49	208307001	RING GEAR END CAP ASSY. WITH BEARING	1
50	208306005	GEAR CASE ASSEMBLY	1
51	204256002	ANVIL SLEEVE ASSEMBLY FOR SERVICE KIT	1
60	941048352	SERVICE NAMEPLATE	1
60	941122874	SERVICE NAMEPLATE <i>018256021 ONLY JP VERSION</i>	1
61	941312023	WARNING LABEL	1
61	941300198	WARNING LABEL <i>018256021 ONLY JP VERSION</i>	1
62	204583001	BLOW MOLDED CARRYING CASE <i>018256010 ASIA, 011 KR, 013 AZN, 014 TW, 015 AZN, 016 KR, 021 JP VERSION</i>	1
66	670219001	CHROME STEEL BALL	1
1200	-	TYPE J GREASE	1



M12 FID

SERVICE INSTRUCTION

TTI Model Number: 018, 256, 010, 011, 012, 013, 014, 015, 016, 021

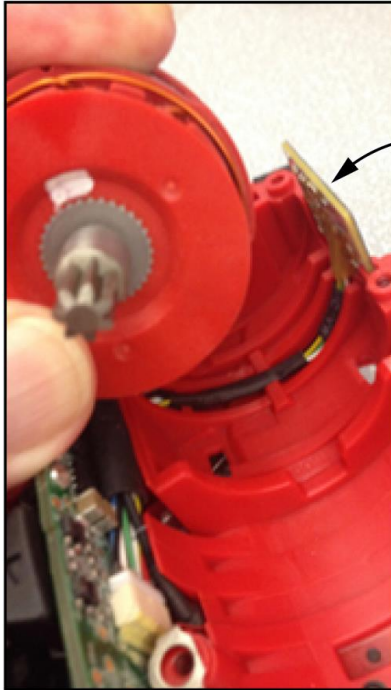
M12™ FUEL IMPACT DRIVER

Bulletin Date:

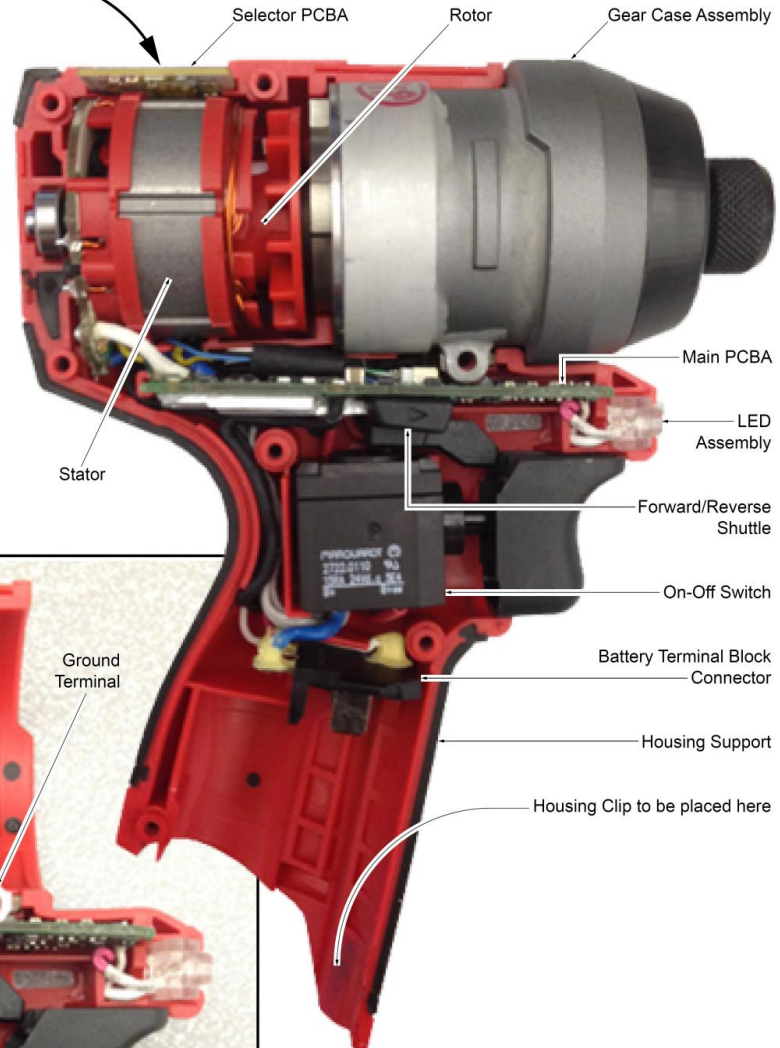
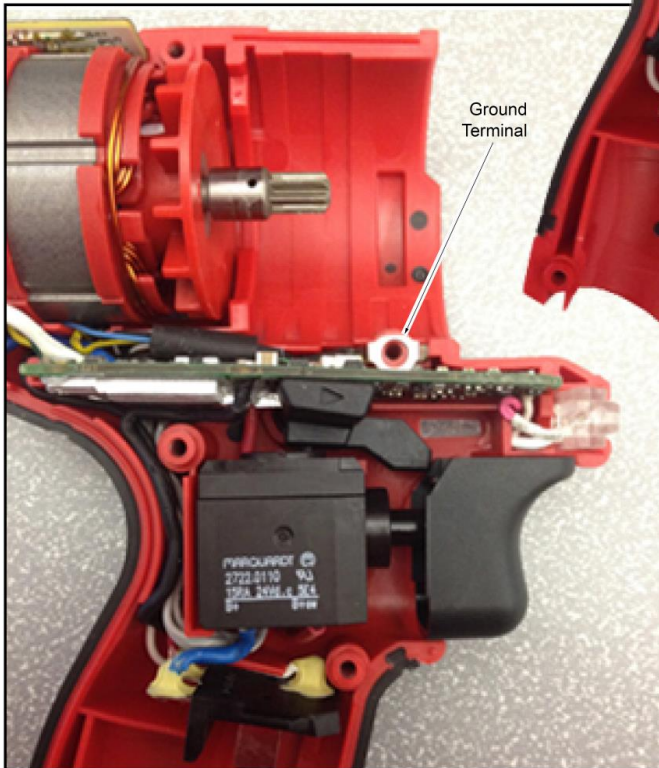
Jan-21

Starting Serial Number:

VERSION A - C2018



Prior to installing Stator/Rotor Assemblies, place the Selector PCBA into the slotted Housing Support cavity. Press wires into channel as shown. Carefully place Stator/Rotor Assemblies into Housing Support, being sure all components are firmly and squarely seated.



Prior to installing the Gear Case Assembly, be sure all elements of the Electronics Assembly are seated properly (Stator, Main PCBA, Selector PCBA, On-Off Switch, LED Assembly and Battery Terminal Block Connector). Be sure the Grounding Terminal is in place and that all wires are pressed down into all wire traps and channels. Check to assure that wires will not interfere with moving parts.

Prior to installing the Housing Cover, place Forward/Reverse Shuttle onto On-Off Switch and through Housing Support opening. Check to assure that wires will not be pinched.

Secure the Housing Cover to the Housing Support with seven M3 x 16mm ST T-10 Screws. Be sure to replace the Housing Clip at the bottom of the battery opening.