



M12 CH

SERVICE PARTS DIAGRAM

TTI Model Number: 018 098 024,026,027,032,034,035,038

M12 FUEL™ SDS HAMMER

Bulletin Date:

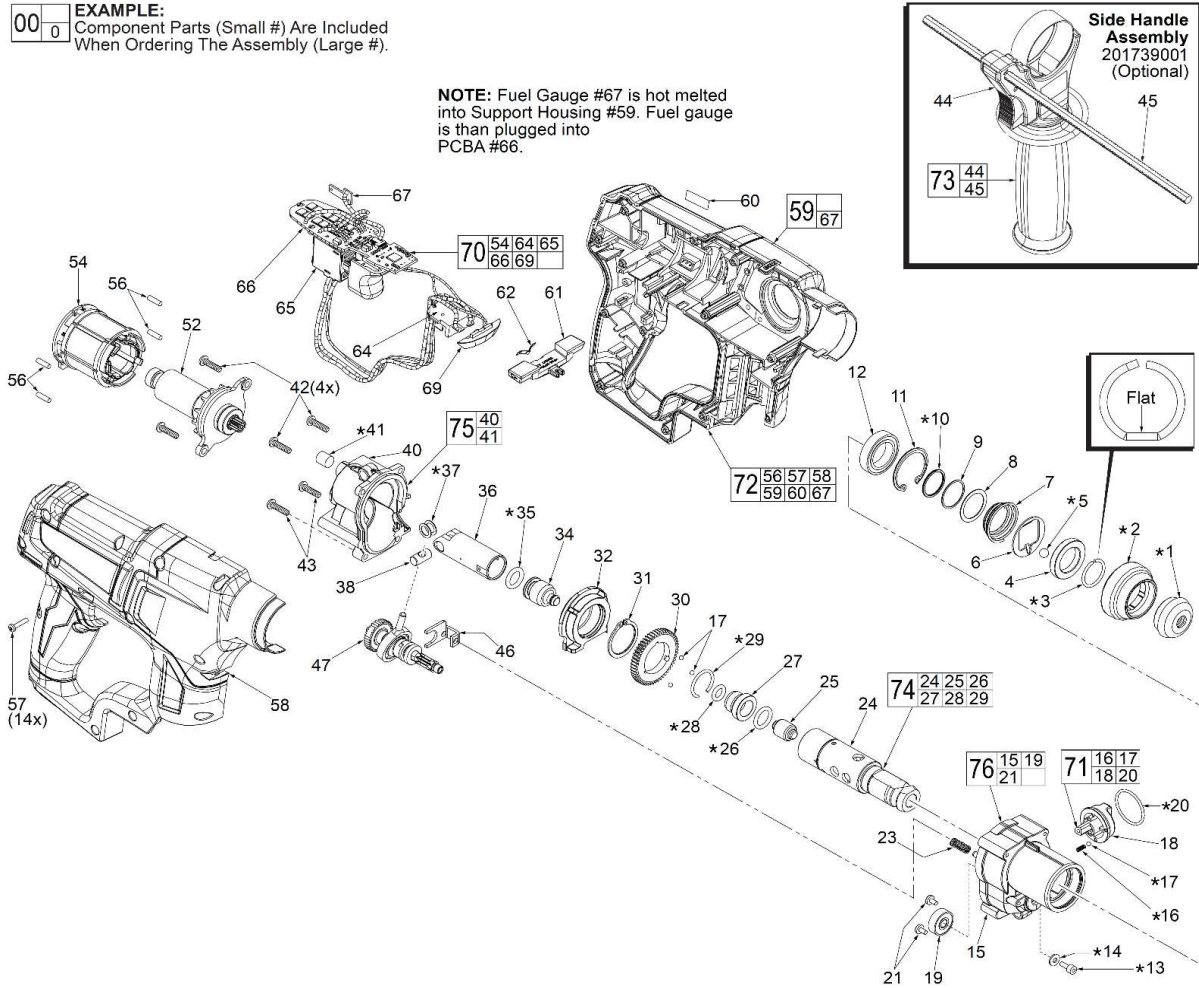
Dec-20

Starting Serial Number:

VERSION A - M2016

EXAMPLE:
Component Parts (Small #) Are Included
When Ordering The Assembly (Large #).

NOTE: Fuel Gauge #67 is hot melted
into Support Housing #59. Fuel gauge
is than plugged into
PCBA #66.



SET 8	*	1000	1	2	3	5	10	13	14	16	17
			20	26	28	29	35	37	41	1200	





M12 CH

SERVICE PARTS LIST

TTI Model Number: 018 098 024,026,027,032,034,035,038

M12 FUEL™ SDS HAMMER

Bulletin Date:

Dec-20

Starting Serial Number:

VERSION A - M2016

ITEM	PART NUMBER	PART DESCRIPTION	QTY (PCS)
1	561993001	RUBBER DUST SHIELD	1
2	523886001	PLASTIC LOCKING SLEEVE	1
3	692991001	D-RING	1
4	611852001	STEEL RING	1
5	693036001	STEEL BALL	1
6	633890002	BALL PLATE	1
7	672799001	SPRING	1
8	634070001	FLAT WASHER - STEEL	1
9	634360001	FLAT WASHER - STEEL	1
10	693113001	SPIRAL RETAINING RING	1
11	633037001	RETAINING RING	1
12	681562001	BALL BEARING	1
13	660173010	SCREW (NEW)	1
13	660173008	SCREW (OLD)	1
14	631806001	WASHER - STEEL	1
15	641831001	FRONT GEAR CASE	1
16	692992001	SPRING	1
17	611405001	STEEL BALL	4
18	591302001	SHIFT KNOB	1
19	681563002	BALL BEARING	1
20	562794001	RUBBER O-RING	1
21	660082001	SCREW	2
23	692988001	SPRING	1
24	621282002	SPINDLE	1
25	692979001	ANVIL	1
26	562790001	RUBBER O-RING	1
27	692989001	RAM CATCHER	1
28	562792001	RUBBER O-RING	1
29	692990001	RETAINING RING	1
30	611486002	GEAR	1
31	672676001	RETAINING RING	1
32	202192002	BEARING HOLDER ASSEMBLY	1
34	692981001	STRIKER	1
35	562791001	RUBBER O-RING	1
36	693529001	PISTON	1
37	633868001	WRIST WASHER	2
38	692982001	WRIST PIN	1
40	641832001	BACK GEAR CASE	1
41	902621001	FELT PLUG	1
42	660383008	SCREW	4



M12 CH

SERVICE PARTS LIST

TTI Model Number: 018 098 024,026,027,032,034,035,038

M12 FUEL™ SDS HAMMER

Bulletin Date:

Dec-20

Starting Serial Number:

VERSION A - M2016

ITEM	PART NUMBER	PART DESCRIPTION	QTY (PCS)
43	660414014	SCREW	2
44	300188086	AUXILIARY HANDLE ASSEMBLY	1
45	620448002	DEPTH GUIDE ROD	1
46	633974001	SHIFTER PLATE	1
47	202193004	WOBBLE SHAFT ASSEMBLY	1
52	202546002	ROTOR ASSEMBLY <i>018098024, 026, 027, 032, 034, 035 VERSION</i>	1
52	204546002	ROTOR ASSEMBLY <i>018098038 ONLY JP VERSION</i>	1
54	298074001	STATOR	1
56	560135001	SILICONE RUBBER CUSHION	4
57	661047001	SCREW	14
58	-	HANDLE COVER	1
59	-	HANDLE SUPPORT WITH FUEL GAUGE	1
60	941312009	GAUGE LABEL	1
61	525547001	F/R BUTTON	1
62	633852003	SPRING PLATE	1
63	941045717	NAMEPLATE LABEL (NOT SHOWN) <i>018098024, 026, 027, 032, 034, 035 VERSION</i>	1
63	941050567	NAMEPLATE LABEL (NOT SHOWN) <i>018098038 ONLY JP VERSION</i>	1
64	303508006	CONTACT PLATE HOLDER	1
65	760438028	SWITCH	1
66	280332006	PCB ASSEMBLY	1
67	290304001	FUEL GAUGE	1
68	305785001	BLOW MOLD CASE ASSEMBLY	1
69	290304001	LED ASSEMBLY	1
70	202547001	ELECTRONICS ASSEMBLY	1
71	202198001	SHIFT KNOB ASSEMBLY	1
72	202548001	HANDLE HOUSING ASSEMBLY	1
73	201739001	HANDLE & DEPTH STOP ASSEMBLY	1
74	202190002	SPINDLE ASSEMBLY	1
75	202194001	REAR GEAR CASE ASSEMBLY	1
76	202191003	FRONT GEAR CASE ASSEMBLY	1
1000	204582003	M12 BRUSHLESS ROTARY HAMMER SERVICE KIT, 018098	1
1200	-	TYPE S2 GREASE 1.4OZ/40G TUBE	1
2000	61-10-1085	PUSH TUBE	1
2001	61-10-1080	EXPANDER & RING SUPPORT	1
2002	61-10-1090	INTERMEDIATE SHAFT CLAMP	1



M12 CH

SERVICE INSTRUCTION

TTI Model Number: 018,098,024,026,027,032,034,035,038

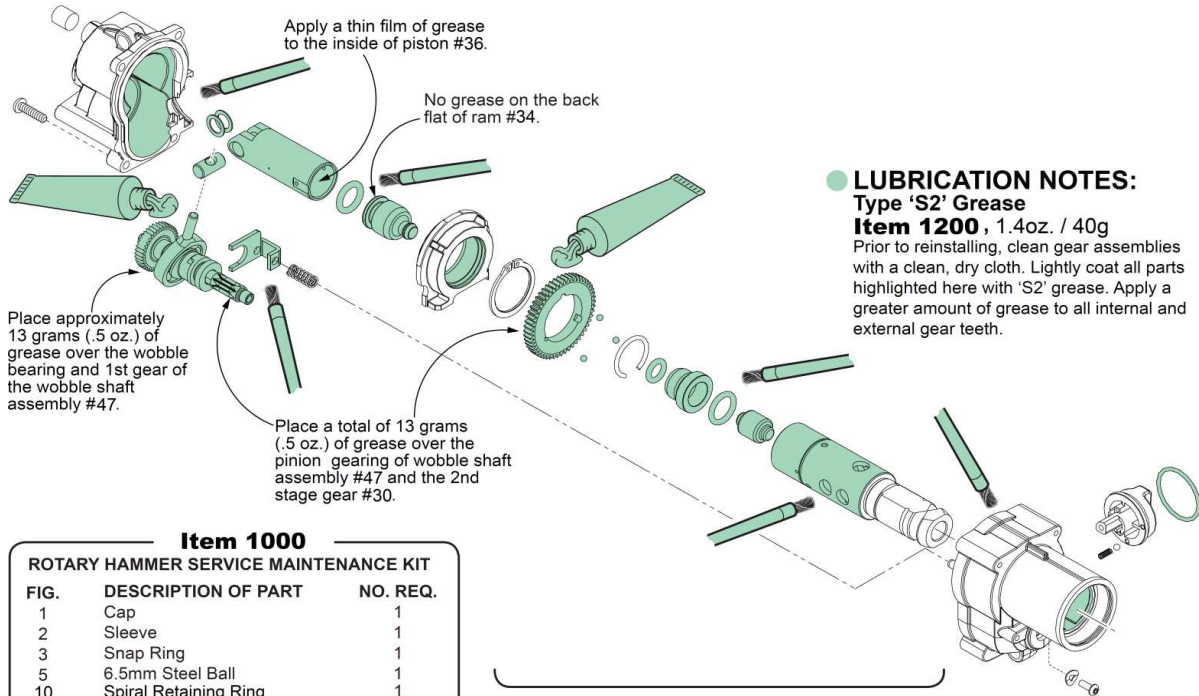
M12 FUEL™ SDS HAMMER

Bulletin Date:

Dec-20

Starting Serial Number:

VERSION A - M2016



Item 1000

ROTARY HAMMER SERVICE MAINTENANCE KIT

FIG.	DESCRIPTION OF PART	NO. REQ.
1	Cap	1
2	Sleeve	1
3	Snap Ring	1
5	6.5mm Steel Ball	1
10	Spiral Retaining Ring	1
13	M3 x 0.5 x 8.5 mm	1
14	Flat Washer	1
16	Spring	1
17	3.0 Steel Ball	1
20	O-Ring	1
26	O-Ring	1
28	O-Ring	1
29	Snap Ring	1
35	O-Ring	1
37	Wrist Pin Washer	2
41	Felt Plug	1
1200	1.4 oz. / 40gr. Tube 'S 2' Grease	1

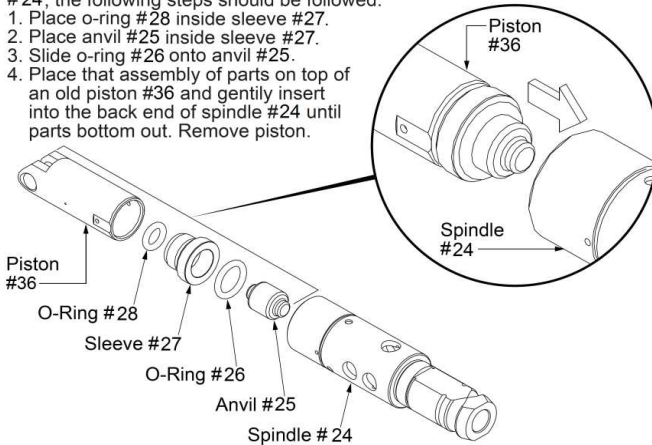
SCREW TORQUE SPECIFICATIONS

FIG.	PART NO.	WHERE USED	SEAT TORQUE	
			(KG/CM)	(Nm)
13	—	Gearcase (Bottom)	15-19	1.47-1.81
21	660082001	Ball Bearing Retainers	8-12	0.79-1.13
42	660383008	Rear Gearcase (Top)	12-17	1.13-1.58
42	660383008	Motor Mounting Plate	12-17	1.13-1.58
43	660414014	Rear Gearcase (Bottom)	12-17	1.13-1.58
57	661047001	Cover Housing	8-10	0.79-0.9

NOTE:

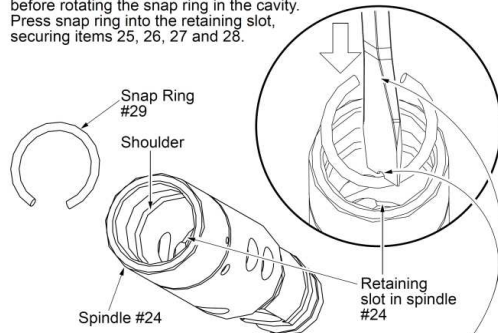
As an aid to installing items #25, #26, #27 and #28 squarely into spindle #24, the following steps should be followed:

1. Place o-ring #28 inside sleeve #27.
2. Place anvil #25 inside sleeve #27.
3. Slide o-ring #26 onto anvil #25.
4. Place that assembly of parts on top of an old piston #36 and gently insert into the back end of spindle #24 until parts bottom out. Remove piston.



NOTE:

As an aid to installing snap ring #29 into spindle #24, rest the snap ring on rear spindle, perpendicular to the opening. To condense the snap ring, use a flat blade screwdriver to push snap ring down into the spindle cavity. Push the snap ring past the shoulder in the spindle before rotating the snap ring in the cavity. Press snap ring into the retaining slot, securing items 25, 26, 27 and 28.



NOTE:

As an aid to installing snap ring, it may be helpful to file or grind a notch in the bottom flat of the screwdriver to accommodate the round of the snap ring. As force is applied to the snap ring, the open end of the ring will close in on the screwdriver. It may be necessary to do additional modifications to the screwdriver (grinding the sides of the blade or shaft) to allow for the insertion of the ring and the removal of the screwdriver.



M12 CH

SERVICE INSTRUCTION

TTI Model Number: 018,098,024,026,027,032,034,035,038

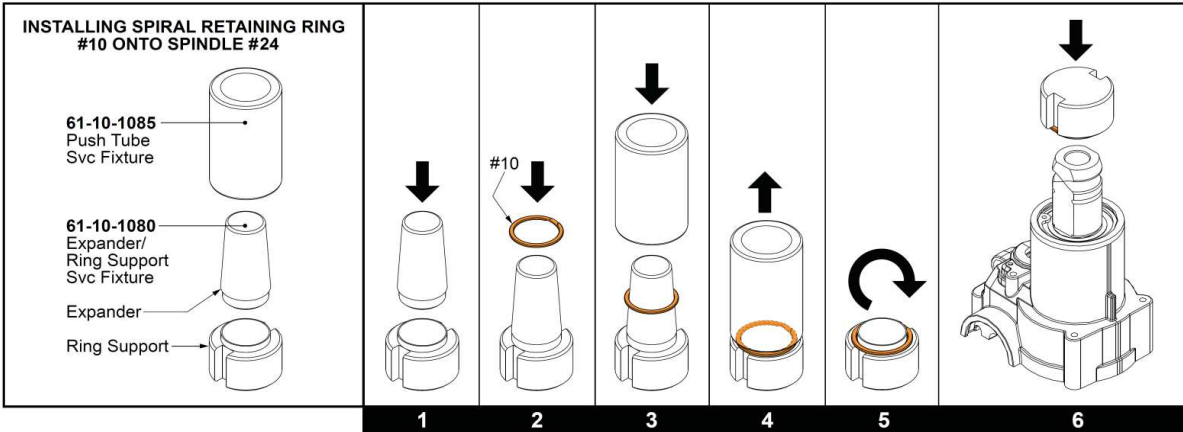
M12 FUEL™ SDS HAMMER

Bulletin Date:

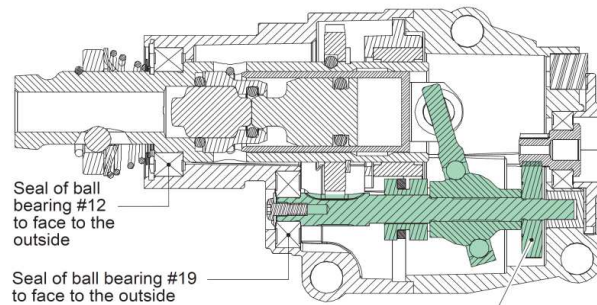
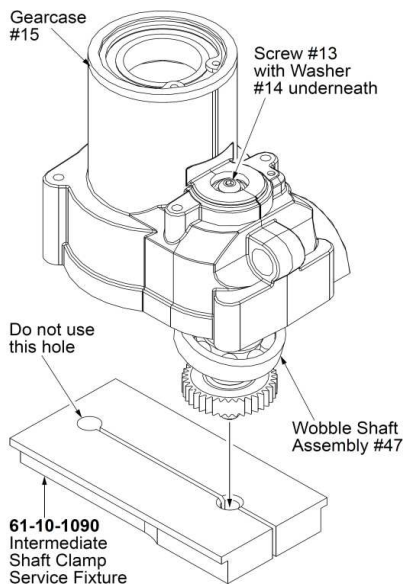
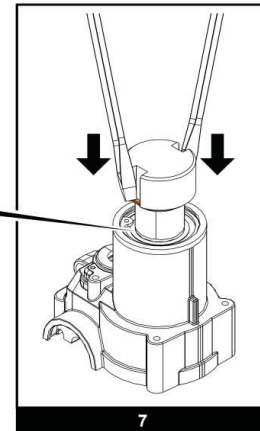
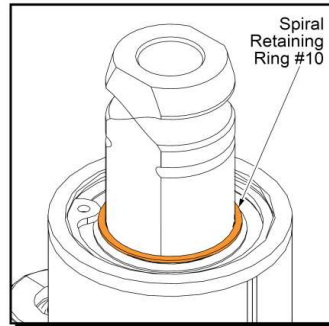
Dec-20

Starting Serial Number:

VERSION A - M2016



1. Assemble Expander/Ring Support Service Fixture (61-10-1080) by inserting the expander into the ring support as shown.
2. Place the assembled fixture on a flat, level surface. Place the Spiral Retaining Ring #10 squarely onto tapered end of the expander.
3. Place the Push Tube Service Fixture (61-10-1085) over the expander until it rests against the spiral retaining ring. With the use of a mallet, drive the push tube and spiral retaining ring down onto the ring support.
4. Remove the push tube. The spiral retaining ring has been expanded around the collar of the ring support.
5. Turn the ring support/spiral snap ring upside down.
6. Place the ring support/spiral snap ring over the top of spindle #24.
7. Locate the two slots on the ring support. Place a flat blade screwdriver in each slot, resting on the spiral snap ring. (It is preferred that the same size screwdrivers are used). Place even downward pressure to remove #10 off of the ring support and onto the spindle. Slide the spiral snap ring down the length of the spindle. Seat squarely into groove of spindle as shown.



DO NOT attempt to service or modify any individual component of wobble shaft assembly #47. **DO NOT** press apart or change the seating of the gear.

To properly assemble the wobble shaft assembly #47 to the gearcase #15, the Intermediate Shaft Service Fixture (61-10-1090) will be needed.

Orient the service fixture as shown. Loosely place the service fixture in the jaws of a bench vise with the lip of the fixture riding on top of the vise.

Insert the narrow shaft end of the wobble shaft assembly through ball bearing #19 (not shown) inside the gearcase. Temporarily secure the wobble shaft assembly to the gearcase using washer #14 and screw #13). Hand tighten.

Place the wobble shaft into the hole of the service fixture as shown. Tighten the jaws of the bench vise to secure the service fixture around the intermediate shaft.

After the proper torque value is applied to screw #13 (**1.47-1.81 Nm or 15-19 kg/cm**), remove the gearcase/wobble shaft assembly from the service fixture.



M12 CH

SERVICE INSTRUCTION

TTI Model Number: 018 098 024,026,027,032,034,035,038

M12 FUEL™ SDS HAMMER

Bulletin Date:

Dec-20

Starting Serial Number:

VERSION A - M2016

