



# M12 BPRT

SERVICE PARTS DIAGRAM

TTI Model Number: 018 252 007, 010

M12™ RIVET TOOL

Bulletin Date:

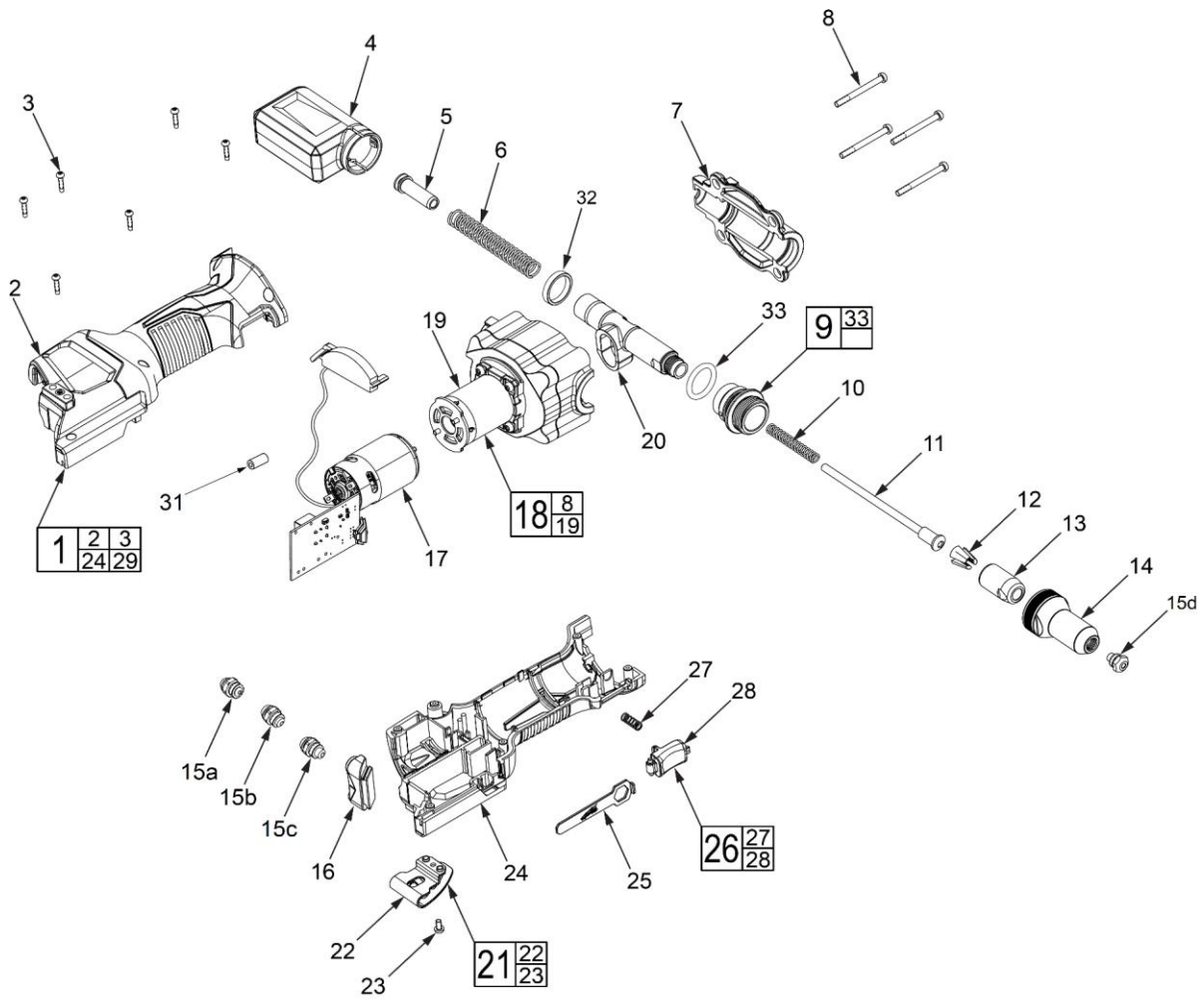
Jun-21

Starting Serial Number:

VERSION A - M2018

00	0
----	---

**EXAMPLE:**  
Component Parts (Small #) Are Included  
When Ordering The Assembly (Large #).





# M12 BPRT

SERVICE PARTS LIST

TTI Model Number: 018 252 007, 010

M12™ RIVET TOOL

**Bulletin Date:**

**Jun-21**

**Starting Serial Number:**

**VERSION A - M2018**

ITEM	PART NUMBER	PART DESCRIPTION	QTY (PCS)
1	204943003	HOUSING KIT (NEW)	1
1	204943001	HOUSING KIT (OLD)	1
2	-	RIGHT HOUSING	1
3	-	M3 SCREW	6
4	313368001	MANDREL COLLECTOR ASSEMBLY	1
5	534038001	MANDREL EXIT TUBE	1
6	696504001	YOKE SPRING	1
7	643196002	TOP HOUSING (NEW)	1
7	643196001	TOP HOUSING (OLD)	1
8	661210002	M4 X 41MM SCREW	4
9	204252002	SLEEVE	1
10	696505001	JAW PUSHER SPRING	1
11	204944001	PUSHER TUBE ASSEMBLY	1
12	696577001	JAWS (NEW)	3
12	696739001	MACHINE JAWS KIT (OLD)	3
13	696578001	GUIDE	1
14	696446001	NOSE HOUSING	1
15a	203252002	2.4MM (3/32") RETENTION NOSE PIECE	1
15b	203252003	3.2MM (1/8") RETENTION NOSE PIECE	1
15c	203252004	4.0MM (5/32") RETENTION NOSE PIECE	1
15d	203252005	4.8MM (3/16") RETENTION NOSE PIECE	1
16	564490001	NOSE PIECE HOLDER	1
17	208401001	MOTOR & ELECTRONICS ASSEMBLY	1
18	208402001	GEAR CASE ASSEMBLY <i>018252007 ASIA VERSION</i>	1
18	208402007	GEAR CASE ASSEMBLY <i>018252010 ONLY JP VERSION</i>	1
19	220530001	GEAR CASE <i>018252007 ASIA VERSION</i>	1
19	220530003	GEAR CASE <i>018252010 ONLY JP VERSION</i>	1
20	622215001	YOKE ASSEMBLY	1
21	204947001	BELT CLIP KIT	1
22	-	BELT CLIP	1
23	-	SCREW	1
24	-	LEFT HOUSING	1
25	613594001	WRENCH	1
26	204948001	TRIGGER KIT	1
27	-	TRIGGER SPRING	1
28	-	TRIGGER	1

	<h1>M12 BPRT</h1> <p>SERVICE PARTS LIST</p>	<b>Bulletin Date:</b> <h2>Jun-21</h2>
	<p>TTI Model Number: 018 252 007, 010</p> <p><b>M12™ RIVET TOOL</b></p>	<b>Starting Serial Number:</b> <p>VERSION A - M2018</p>

ITEM	PART NUMBER	PART DESCRIPTION	QTY (PCS)
29	941122420	RATING LABEL (NOT SHOWN) (NEW) <i>018252007 ASIA VERSION</i>	1
29	940946973	RATING LABEL (NOT SHOWN) (OLD) <i>018252007 ASIA VERSION</i>	1
29	941050560	RATING LABEL (NOT SHOWN) <i>018252010 ONLY JP VERSION</i>	1
30	941300112	WARNING LABEL (NOT SHOWN) <i>018252007 ASIA VERSION</i>	1
30	941300242	WARNING LABEL (NOT SHOWN) <i>018252010 ONLY JP VERSION</i>	1
31	850010006	FERRITE BEAD	4
32	614576001	REAR BUSHING (NEW)	1
32	613593001	REAR BUSHING (OLD)	1
33	564535001	RUBBER SEAL	1
1200	-	TYPE T GREASE	1



# M12 BPRT

SERVICE INSTRUCTION

TTI Model Number: 018 252 007, 010

M12™ RIVET TOOL

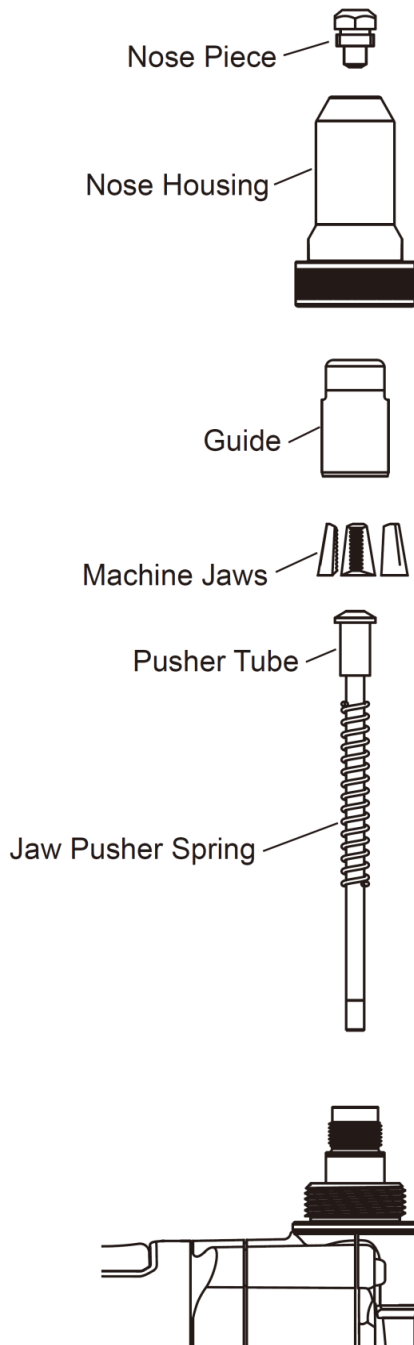
**Bulletin Date:**

**Jun-21**

**Starting Serial Number:**

**VERSION A - M2018**

## LUBRICATION INSTRUCTIONS



Clean and lubricate the nose of the tool after heavy use (5000 rivets) or if tool becomes contaminated with dust and debris.

1. Remove battery pack.
2. Remove the nose housing from the tool and the nose piece from the housing.
3. Remove the guide (with jaws), pusher tube, and spring from the tool.
4. Clean all pieces with a dry cloth and inspect for damage. If damaged, return to a MILWAUKEE service facility for repairs.
5. Apply a small amount of Item 1200: 51-08-4290 grease to the pieces and reassemble, as shown. Ensure the jaws are properly seated in the guide.